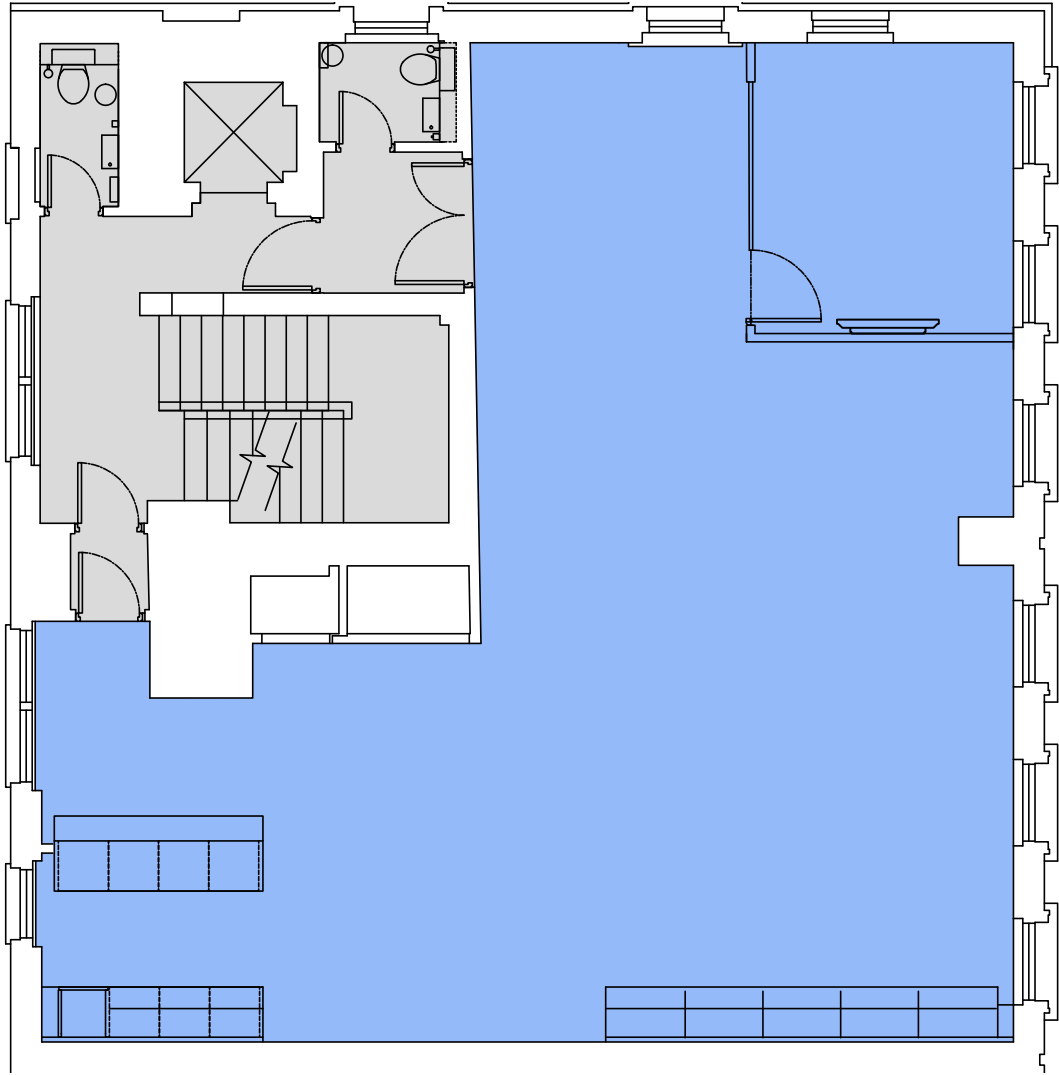


3rd floor plan  
1,088 sq ft (101.1 sq m)



Bedford Street

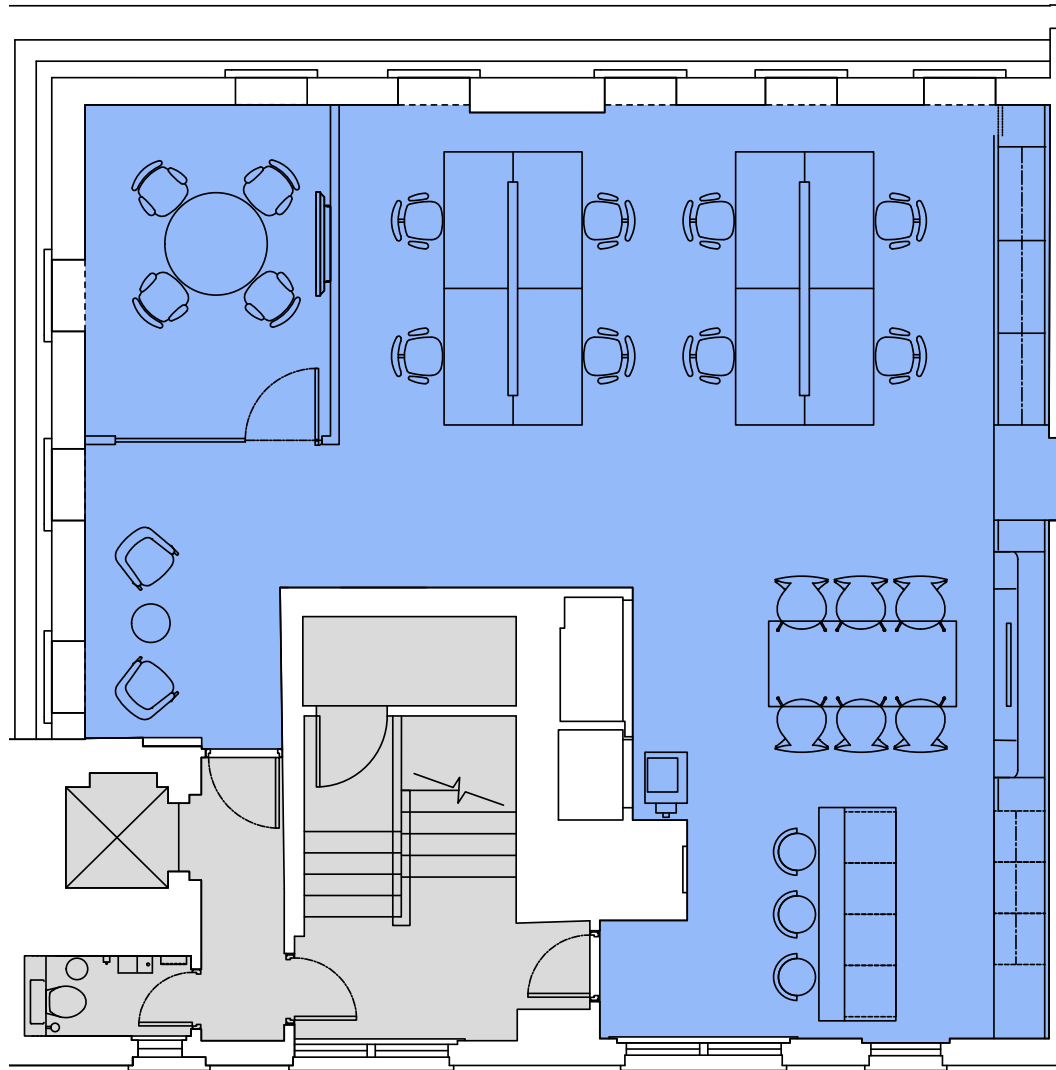
- Floorspace
- Core



## 4th floor space plan

963 sq ft (89.5 sq m)

- 1 reception area
- 8 fixed workstations
- 1 collaboration area
- 1 breakfast bar & breakout area
- 1 meeting room
- 1 kitchenette



Bedford Street

- Floorspace
- Core

